

New Faculty Professional Development Workshop

Using Personal Response Systems in Classroom

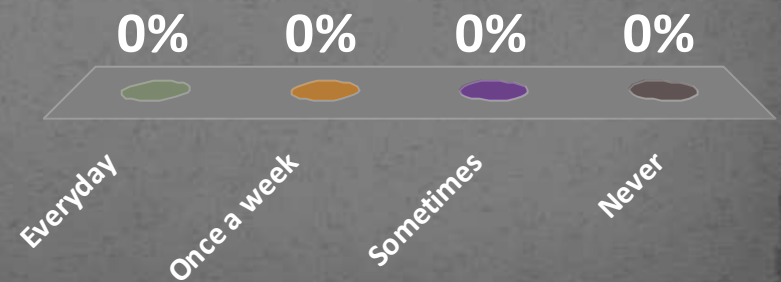
Arun K. Verma
Center for Teaching Excellence
September 28, 2009

Personal Response System

- Wireless communication
- Transmitter / Receiver
- Flash a question using PowerPoint – Answers are collected using “Turning Point”
- Anonymous/ Individually tracked
- <http://www.turningtechnologies.com>

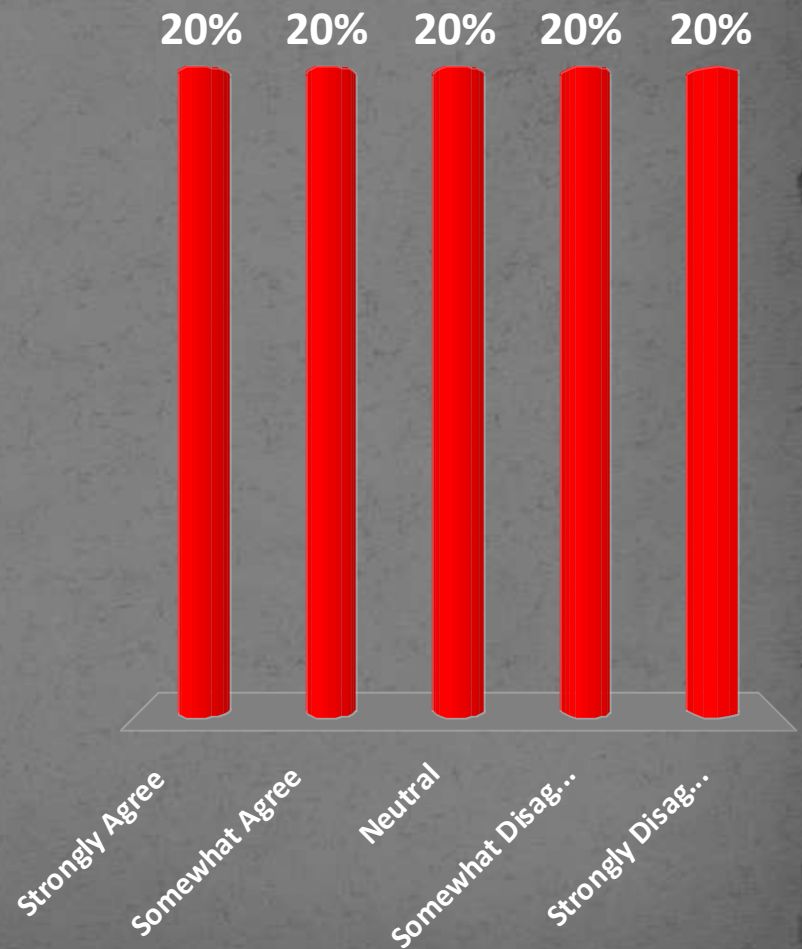
How often do you use PowerPoint in classroom?

1. Everyday
2. Once a week
3. Sometimes
4. Never



Use of Personal Response System can improve students' comprehension

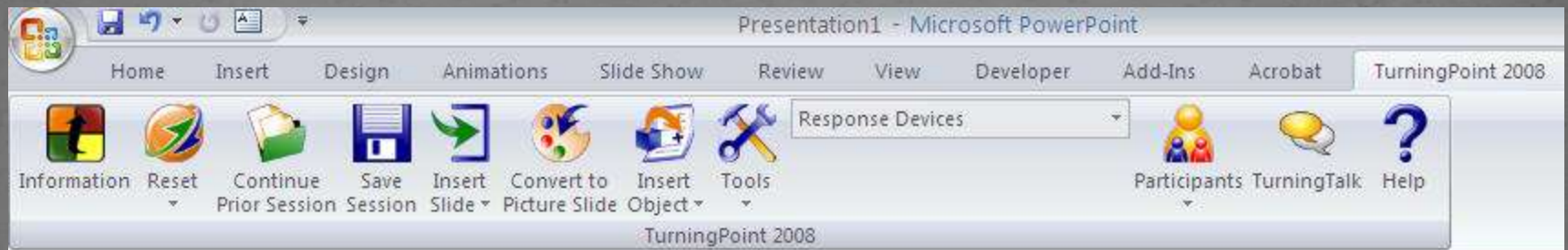
1. Strongly Agree
2. Somewhat Agree
3. Neutral
4. Somewhat Disagree
5. Strongly Disagree



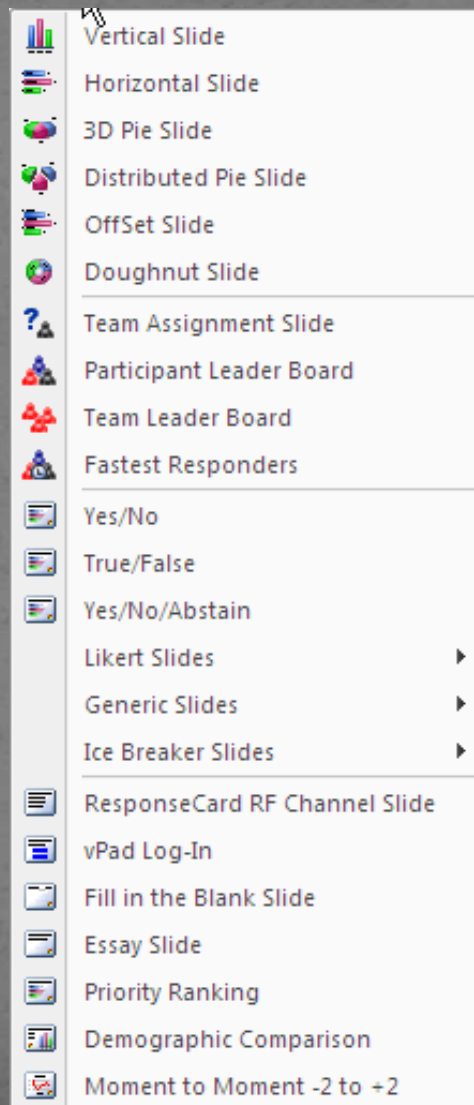
The Workshop

- Features Overview
- Hands-on Training
- Slide Creation
- Data Collection
- View Data

Additional Tab for RS features



Inserting New Slide



Various Active Objects and Tools

- Charts ▶
- Animated 2D/3D Charts ▶
- Answer Now ▶
- Countdown ▶
- Response Counter ▶
- Response Table ▶
- Correct Answer Indicator ▶
- Stats ▶
- Text Message

- Reports
- Session Management ▶
- Standards
- Conditional Branching
- Import from TestingPoint
- Parser ▶
- Ranking Wizard
- WebCT Wizards ▶
- Blackboard Wizard
- Sakai Wizard
- VantagePoint
- QuestionPoint
- Enterprise Manager
- Upgrade TurningPoint Receiver
- ResponseWare
- Enable Settings Pane
- Settings


Clear All Answer Values

Answer 1: Stanford
Answer Value:
Incorrect ▼

Answer 2: West Virginia University
Answer Value:
Incorrect ▼

Answer 3: Columbia University
Answer Value:
Correct ▼

Answer 4: Penn State
Answer Value:
Incorrect ▼



Common Settings - Presentation

TurningPoint - Settings

Settings | Polling Test

Response Device
Presentation

Answer Settings

Answer Bullet Format	Decimal Period
----------------------	----------------

Chart Settings

Auto Scale Charts	True
Chart Colors	Color Scheme
Chart Labels	Aliases
Chart Value Format	0%
Standard Chart Type	Vertical

Competition Settings

Default Number of Teams	5
Include Non-Responders	False
Maximum Responders	5
Participants In Leaderboard	5
Teams In Leaderboard	5

Fill in the Blank Settings

Display Keywords	True
Display Results	True
Include Other Results	True
Number of Results	5

Restore default presentation settings

Common Settings All Settings

Done

Common Settings – Review Only

Settings Polling Test

- Response Device
 - Presentation
 - 3 How often do you use PowerPoint in...
 - 1 Everyday
 - 2 Once a week
 - 3 Sometimes
 - 4 Never
 - 4 Use of Personal Response System ca...
 - 1 Strongly Agree
 - 2 Somewhat Agree
 - 3 Neutral
 - 4 Somewhat Disagree
 - 5 Strongly Agree
 - 14 Where is CTE located?
 - 1 Armstrong Building
 - 2 Harvey Library
 - 3 Wigwam
 - 4 DuPont Building

Chart Value Format	0%
Reset Charts	True
Review Only	False
Standard Chart Type	Vertical
Competition Settings	
Default Number of Teams	5
Include Non-Responders	False
Maximum Responders	5
Participants In Leaderboard	5
Teams In Leaderboard	5
Fill in the Blank Settings	
Display Keywords	True
Display Results	True
Include Other Results	True
Number of Results	5
Misc	
Add-In Always Loaded	False
Allow Duplicates	False
Allow User Feedback	True

Restore default presentation settings

Common Settings All Settings

Common Settings – Response Device

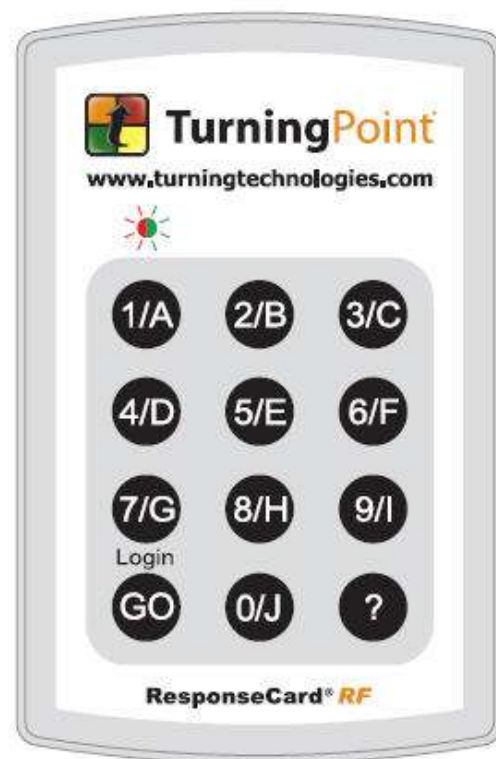
The screenshot shows the 'TurningPoint - Settings' window with the 'Response Device' tab selected. The 'ResponseCard Channels' section is expanded, showing a list of settings. The 'Empty' field is circled in red. The 'ResponseCard Misc' section includes 'Expected Devices' (30), 'Enforce Participant List' (False), 'Invalid Response Notification' (False), and 'Overwrite User Information' (False). The 'vPad' section includes 'Enable vPad / RemotePoll' (False) and 'Port Number' (1001). The 'ResponseWare' section includes 'Always Show Login Info' (False). At the bottom right, there are radio buttons for 'Common Settings' (selected) and 'All Settings'. A 'Done' button is located at the bottom right of the window.

Section	Setting	Value
ResponseCard Channels	Empty	41
	ResponseCard Misc	
ResponseCard Misc	Expected Devices	30
	Enforce Participant List	False
	Invalid Response Notification	False
	Overwrite User Information	False
vPad	Enable vPad / RemotePoll	False
	Port Number	1001
ResponseWare	Always Show Login Info	False

Channel Setting

Channel Setting for the **ResponseCard® RF**

1. Press and release the "GO" button.
2. While the light is flashing red and green,
Enter 2 digit channel code.
(ie. channel 1 = 01, channel 21 = 21).
3. After the second digit is entered, Press
and release the "GO" button.
4. Press and release the "1/A" button.
The light should flash yellow to confirm
communication with receiver.



Participants Wizard



Reports

Reports - Culture shock

Sessions Reports

Please select the report(s) to generate

Reports by Category

- Results by Question Reports
- Demographic Reports
- Participant Results Reports*
- Results by Participant Reports
- Participant Lists
- Standards Reports
- Comparative Scoring Reports
- Team Scoring Reports*
- Percentile Reports*
- Other Reports

Categories in italics have options

Change numeric responses to alphabetic responses (1 = A, 2 = B, etc)

Microsoft Excel - Samplebook

Description and Report Sample

Report Description

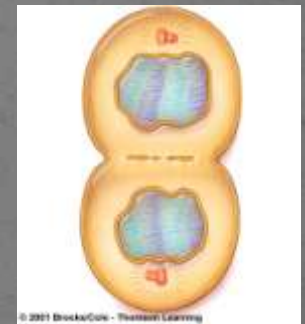
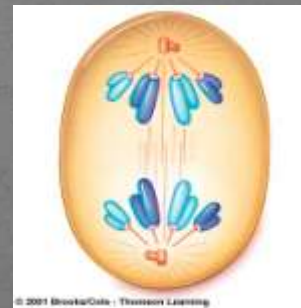
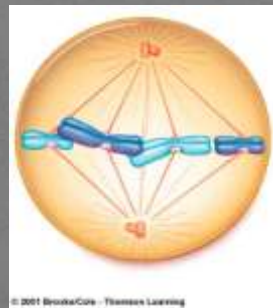
The description of the currently selected report will be displayed here.

Exit Generate Report

Which sequence correctly defines Mitosis?

- 0% 1. Prophase, metaphase, anaphase, telophase
- 0% 2. Metaphase, telophase, anaphase, prophase
- 0% 3. Anaphase, prophase, telophase, metaphase
- 0% 4. Telophase, metaphase, prophase, anaphase

Review of sequence



Prophase

Metaphase

Anaphase

Telophase

Which illustration shows a precipitation reaction?

<reading assignment: preparation>



0% 0% 0% 0%



1	2	3	4	5	6	7	8	9	10	11	12	13	14	15	16	17	18	19	20
21	22	23	24	25	26	27	28	29	30		↘			↘		↘		↘	

Features

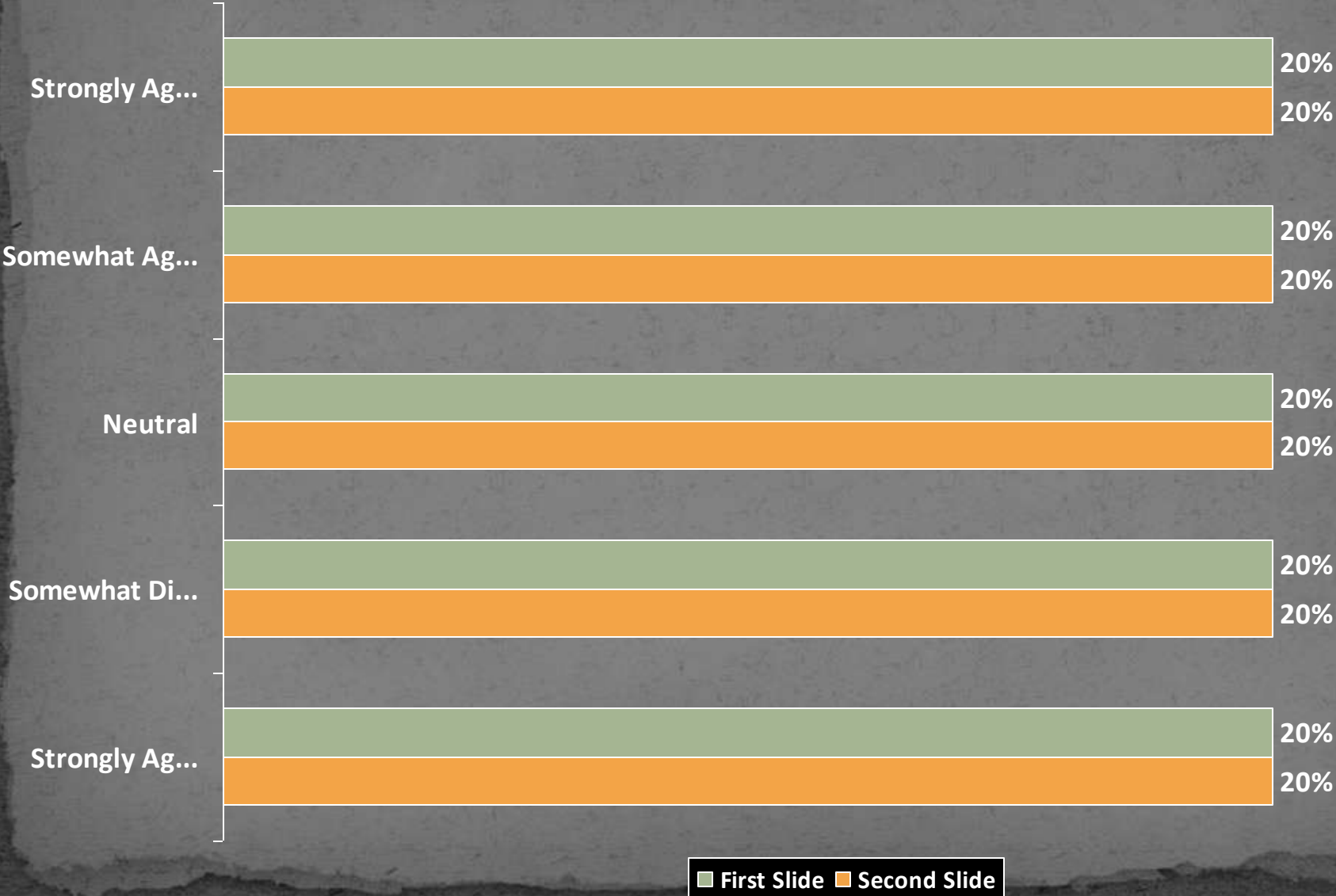
- Convert Power Point
- Convert Word Document
- Insert Images
- Showbar

Use of Personal Response System can improve students' comprehension

1. Strongly Agree
2. Somewhat Agree
3. Neutral
4. Somewhat Disagree
5. Strongly Agree



Use of Personal Response System can improve students' comprehension



Hands-on

- Click on :Turning Point 2008 icon (NOT PowerPoint) on the desktop
- Tab: TurningPoint 2008
- Select a channel by going to Tools – Settings - Response Device (left top) – Pull down menu on the right
- Insert a slide
- ...
- ...
- ...

Results

- Tools – Reports- select the session – reports – select appropriate category to generate report.
- One can select more than one category and each report will be created under individual tab in excel.

Questions / Comments / Suggestions

arun.verma@hamptonu.edu

(757) 728-6983